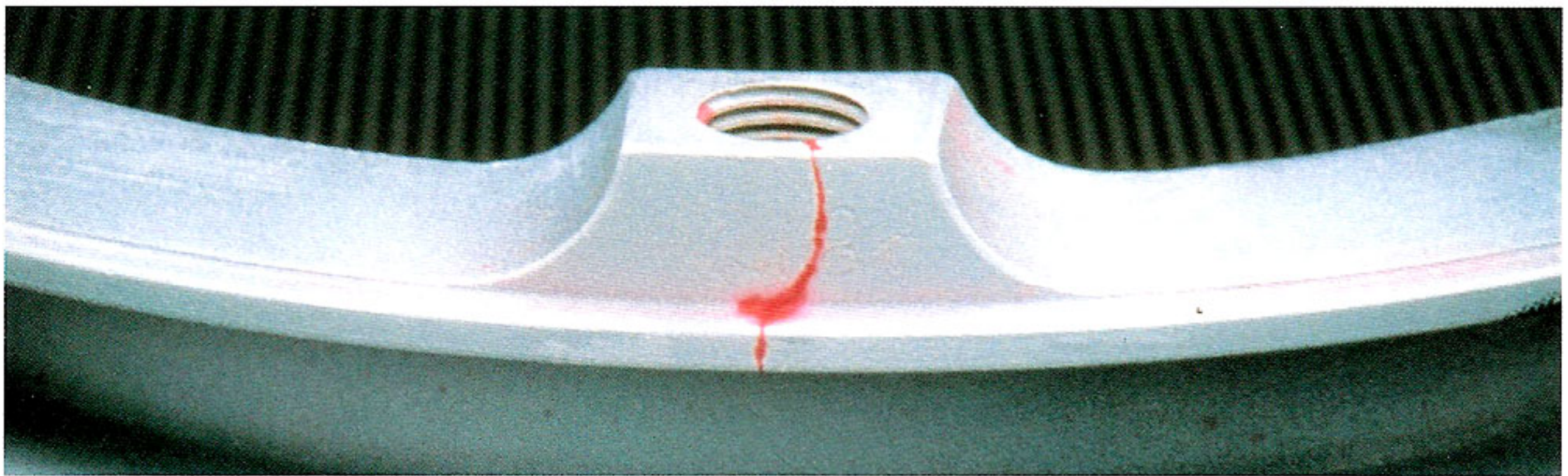


Visible dye penetrant inspection materials

RED MARK



Visible dye penetrant inspection materials indicating any defects open to the surfaces of all kinds of materials in "RED".

Visible dye penetrant inspection allows the user to detect defects open to the surfaces and through cracks easily using penetrant, developer, and remover. On all kinds of inspection objects, the penetrant, developer, and remover draw clear and accurate patterns of the defects, if any, in "RED" against the "WHITE" background. Various types of RED MARK are provided for different applications.



● Container

Aerosol type : a set of six cans (one penetrant, two developers, and three removers)

Can type : 3.8 liter can

● Package

Aerosol type : four, six, or eight set package in a corrugated carton

Can type : 3.8 liter can two or four can package in corrugated carton
18 liter can one can package in corrugated carton

● SOLVENT REMOVABLE TYPE

REGULAR TYPE	Penetrant	R-1A (NT)
	Developer	R-1S (NT)
	Remover	R-1M (NT)
MIL APPROVAL TYPE In accordance with MIL-I-25135	Penetrant	R-1A (NT) /1
	Developer	R-1S (NT) /1
	Remover	R-1M (NT) /1
LOW HALOGEN/ SULPHUR TYPE Compatible with stainless steel, Ni, Ti alloys	Penetrant	R-1A (NT) Special
	Developer	R-1S (NT) Special
	Remover	R-1M (NT) Special
NON-FLAMMABLE TYPE (Outregulation Flon is used)	Penetrant	RN-1A
	Developer	RN-1S
	Remover	RN-1M
NON-FLAMMABLE TYPE (Water Base)	Penetrant	RW-1A
	Developer	RW-1S
	Remover	RW-1M
HIGH TEMPERATURE TYPE Used for hot surfaces (90 - 250°C)	Penetrant	R-1AH (NT)
	Developer	R-1SH (NT)
	Remover	R-1MH (NT)

● WATER WASHABLE PENETRANT

REGULAR TYPE	R-3B (NT)	Used for casting, key groove, and screw parts.
LOW HALOGEN/ SULPHUR TYPE	R-3B (NT) Special	Used for welding bead on stainless steel and Ti-alloys.
WATER BASE TYPE	R-3B (NT) W	Used for raw materials like slab. Non-flammable.

● SPECIAL DEVELOPER

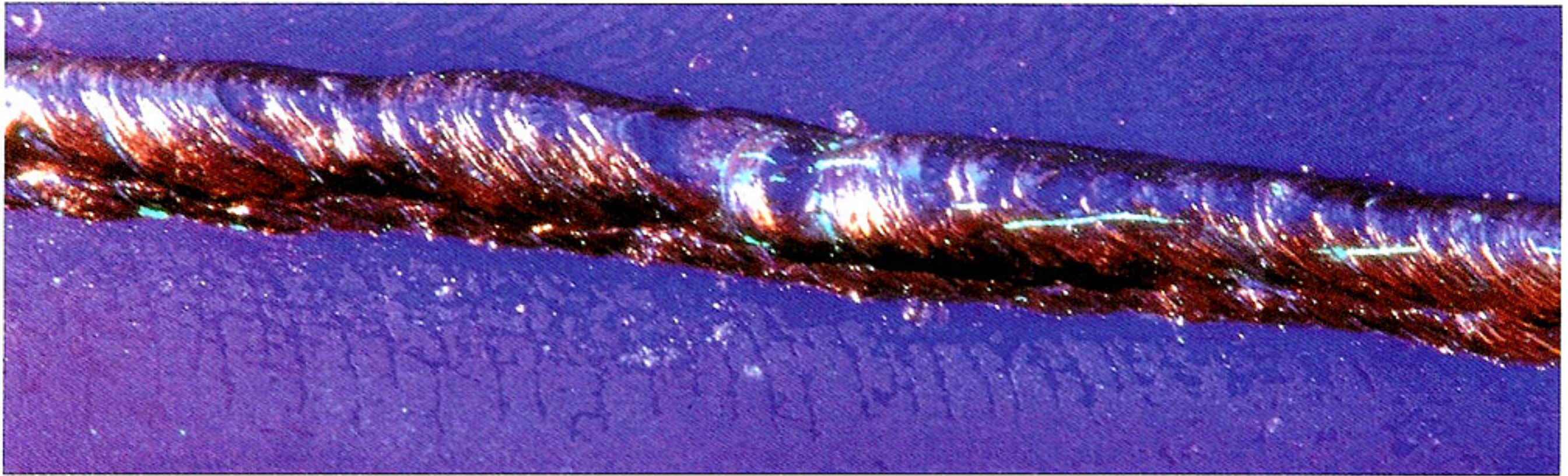
EASY REMOVABLE TYPE	R-1SB	Easy removal of developer coating after inspection.
FAST DRYING TYPE	R-1SD (NT) R-1SD (NT) Special	Used at high humidity, low temperature. Low halogen/sulphur.
WATER SUSPENDABLE TYPE	R-3W	Developer particles should be suspended in water. Non-flammable.
PASTE TYPE	DP-1S	Applied with sprayer. High viscosity, non-flammable.

● SPECIAL REMOVER

SLOW DRYING TYPE	R-1MS (NT) R-1MS (NT) Special	Volatilization speed is slow. Low halogen/sulphur.
WATER AEROSOL TYPE	R-3M (NT) R-3M (NT) Special	Pure water is filled into aerosol. Low halogen/sulphur.

Fluorescent penetrant inspection materials

NEO GLO



**Ideal for detecting fine defects.
Fluorescent patterns of defects more perceptible to naked eye.**

NEO GLO have been proved to be reliable penetrants under honor of authentication awarded by :
U.S. Air Force, Japan Air Self Defense Force, Aircraft manufacturers in U.S. and U.K., etc.
Their scope has been extended to inspections for new materials, semiconductors, and rocket parts.

■ TYPES AND USES OF PENETRANT

● LOW SENSITIVITY FLUORESCENT WATER WASHABLE PENETRANTS

F-4A/1 F-4A-Au	Casting, raw material parts and steels.
F-4A LOX	Machinery, machine parts which use liquid oxygen.
F-4A-W	Coarse surface, ceramics, plastic, porous materials.

● MEDIUM SENSITIVITY FLUORESCENT WATER WASHABLE PENETRANTS

F-4A-B F-4A-B (EL) F-4A-B/1	Machine parts, automobile parts, plants, aircraft parts, forging, welding.
-----------------------------------	--

● HIGH SENSITIVITY FLUORESCENT WATER WASHABLE PENETRANTS

F-4A-C F-4A-C/1	Machine process finished surface, very smooth surface.
--------------------	--

● ULTRA HIGH SENSITIVITY FLUORESCENT WATER WASHABLE PENETRANTS

F-4A-E F-4A-E/2	Special parts, stainless steel, Ti, Ni, Co, Mo, and their alloys.
--------------------	---

● FLUORESCENT POST-EMULSIFIABLE PENETRANTS

LOW SENSITIVITY : F-5L/1	Machine parts, aircraft, automobile parts, precision casting and forging
MEDIUM SENSITIVITY : F-5L-SP/1	
HIGH SENSITIVITY : F-6A/1	
ULTRA HIGH SENSITIVITY : F-6A-SP, F-6A-SP/1	

● Separate-type water washable fluorescent penetrants

Easy to recycle and treat wastewater

Low sensitivity : FB-1000
Medium sensitivity : FB-1200
High sensitivity : FB-1500

● Emulsifiers

Lipophilic : F-5E-SP/1
Hydrophilic : F-6E-W/1

● Developers

Dry powder : F-5D-Special, F-5D/1
Water suspendable : F-4W-SP/1
Fast drying : F-4S (NT), F-4S (NT)/1
Non-flammable RN-1S

● Removers

Flammable : R-1M (NT), R-1M (NT)/1
Non-flammable : RN-1M

● Container

Penetrants, Emulsifiers, Fast-drying Developers, Removers..... 3.8, 18 liter can
Dry Developers..... 1, 2 kg in corrugated carton
Water suspendable Developer..... 6 kg can

