



SILVER CONTACT TIP

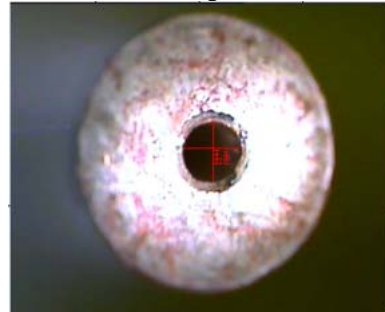


Comparison Contact Tip

Silver Contact Tip (before weld)



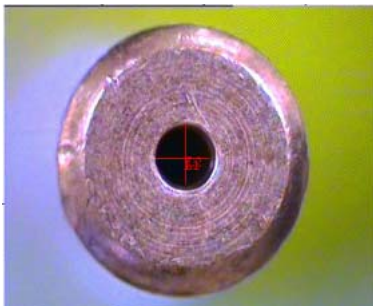
Silver Contact Tip (after weld)



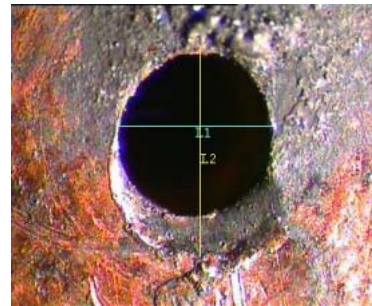
S No.	Description	Result	Calibration
L1	Length	1.339 Millimeter	X:6/224 Y:6/224 Millimeter/Pixel
L3	Length	1.372 Millimeter	X:6/224 Y:6/224 Millimeter/Pixel

S No.	Description	Result	Calibration
L1	Length	1.366 Millimeter	X:6/224 Y:6/224 Millimeter/Pixel
L2	Length	1.396 Millimeter	X:6/224 Y:6/224 Millimeter/Pixel

Cu,Cr,Zr Contact Tip (before weld)



Cu,Cr,Zr Contact Tip (after weld)



S No.	Description	Result	Calibration
L1	Length	1.366 Millimeter	X:6/224 Y:6/224 Millimeter/Pixel
L3	Length	1.396 Millimeter	X:6/224 Y:6/224 Millimeter/Pixel

S No.	Description	Result	Calibration
L1	Length	1.542 Millimeter	X:2/192 Y:2/192 Millimeter/Pixel
L3	Length	1.914 Millimeter	X:2/192 Y:2/192 Millimeter/Pixel

Note : 240 Amp , 28 Volt, Flow Rate 12 l/min , 100% CO₂
Welding Machine **NOT OVERLOAD** at 15 min